

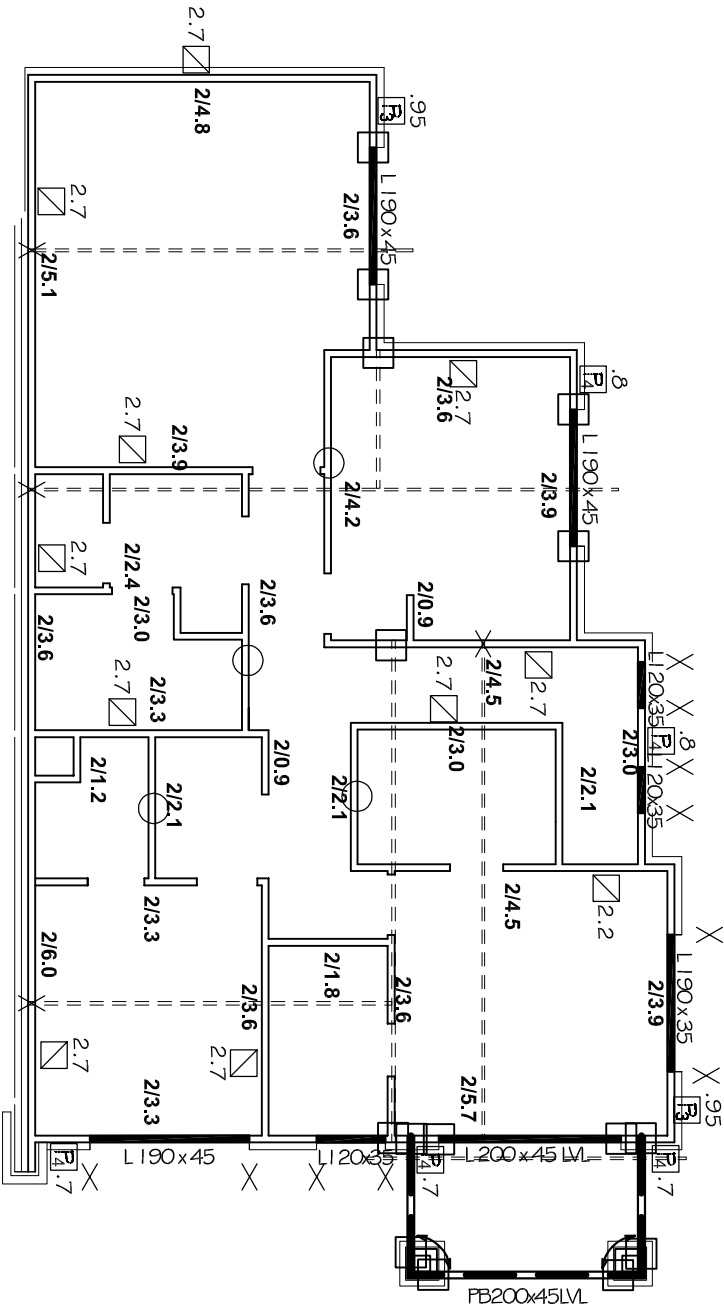
UPPER WALL FRAME LAYOUT

CEILING HEIGHT - 2700mm

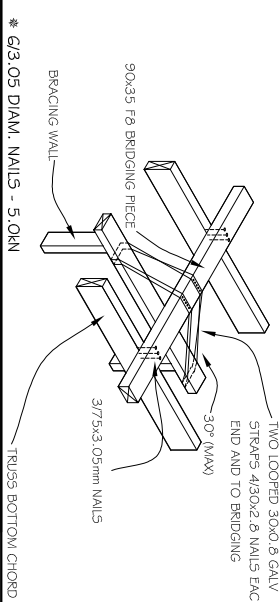
STRUCTURAL DETAILS

- T & B PLATES 90x35 MGP10 UNO
- EXTERNAL STUDS 90x35 MGP10 @ 600 CTS UNO
- STUDS POSITIONED DIRECTLY BENEATH RAFTER/TRUSSES @ MAX 600MM CTS
- INTERNAL STUDS 90x35 MGP10 @ 600 CTS UNO
- STRUTS BLOCKED OVER 2 SINGLE 90x45 MGP10 STUDS BLOCKING 90x70 MGP10
- NOGGING 90x35 PINE @ 1350 MAX CTS
- 1/90x35 MGP10 DIRECTLY BENEATH INTERNAL SUPPORT ALL STRUCTURAL MATERIAL TO BE MGP10, UNO.
- JOINT GROUP=JD5
- ALL MATERIALS ALLOWED AS PER AS 1684.2-2010
- NON-LOAD BEARING WALLS UNDER TRUSSES SET DOWN 20mm
- STUDS AT SIDES OF OPENINGS AND POINT LOAD STUDS AS SHOWN BELOW

- △ = 1/90x45 MGP10
- X = 2/90x35 MGP10
- = 2/90x45 MGP10



TOP PLATE FIXING DETAILS - PARALLEL TO WALL



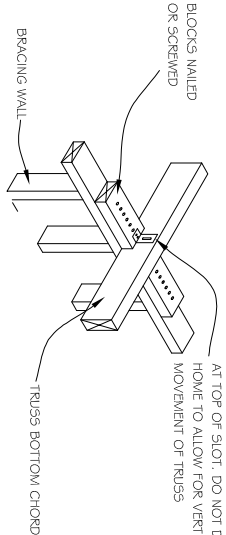
* 6/3.05 DIAM. NAILS - 5.0kN

TOP PLATE FIXING DETAILS - PERP. TO WALL



- TABLE B.22 (I)

BLOCKS NAILED AT TOP OF SLOT. DO NOT DRIVE HOME TO ALLOW FOR VERTICAL MOVEMENT OF TRUSSES OR SCREWED

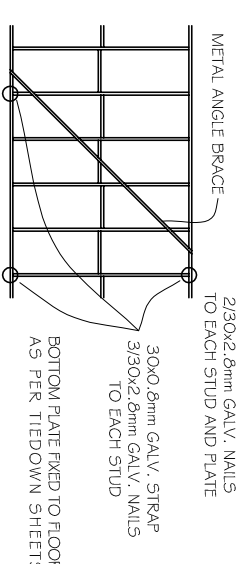


* 6/3.05 DIAM. NAILS - 5.0kN
* 3/No. 1.4 TYPE 17 SCREWS - 1.0kN

BRACING UNITS

METAL ANGLE BRACE

- TABLE B.18 (C)

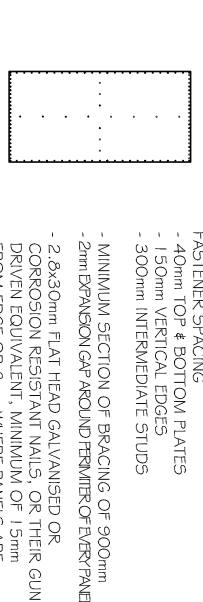


□ - 1800mm (2.7kN) □ - 2100mm (3.15kN)

□ - 2400mm (3.6kN) □ - 2700mm (4.05kN)

OS BRACE TYPE #3 | SYSTEM 6.0kN/m

OR EQUIVALENT

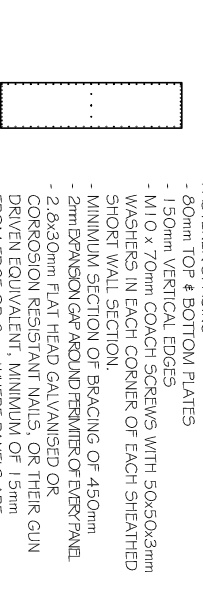


- FASTENER SPACING
 - 40mm TOP & BOTTOM PLATES
 - 150mm VERTICAL EDGES
 - 300mm INTERMEDIATE STUDS
- MINIMUM SECTION OF BRACING OF 900mm
- 2mm DRAGON GAP AROUND PERIMETER OF EVERY PANEL
- 2.8x30mm FLAT HEAD GALVANISED OR CORROSION RESISTANT NAILS, OR THEIR GUN DRIVEN EQUIVALENT. MINIMUM OF 15mm FROM EDGE OR 8mm WHERE PANELS ARE FIXED TO INTERNAL FRAMING

□ - 900mm (5.4kN) □ - 1200mm (7.2kN)

OS BRACE TYPE #4 | SHORT WALL BRACING | SYSTEM 2.2kN/m

OR EQUIVALENT



- FASTENER SPACING
 - 80mm TOP & BOTTOM PLATES
 - 150mm VERTICAL EDGES
 - M10 x 70mm COACH SCREWS WITH 50x50x3mm WASHERS IN EACH CORNER OF EACH SHEATHED SHORT WALL SECTION
 - MINIMUM SECTION OF BRACING OF 450mm
 - 2mm DRAGON GAP AROUND PERIMETER OF EVERY PANEL
 - 2.8x30mm FLAT HEAD GALVANISED OR CORROSION RESISTANT NAILS, OR THEIR GUN DRIVEN EQUIVALENT. MINIMUM OF 15mm FROM EDGE OR 8mm WHERE PANELS ARE FIXED TO INTERNAL FRAMING

□ - 450mm (1.0kN) □ - 600mm (1.3kN)

ADDITIONAL ANGLE BRACE




WINDSPEED (per residence) :

W1 44 m² = 25 kN

W2 22 m² = 13 kN

S:\OAKRIDGE TAKEOFFS\DEDICATED DEVELOPMENTS\638 BURBRIDGE RD\DWLG 3\DWLG 3 638 BURBRIDGE RD.dwg

DWELLING 3

DEDICATED DEVELOPMENTS	BOJACK		AMENDMENTS	SHEET 4/6		OAKRIDGE BUILDING SERVICES	WINDSPEED (per residence) :	N I	
	638 BURBRIDGE RD , WEST BEACH			DATE : 14/02/19	SCALE: 1 : 100		W I	44 m² = 25 kN	
	Detailer: Matt Opie			Signed: 			JOB No. T102339	W2	22 m² = 13 kN
							PH : 83837222 FAX : 83837225		